

LOCATED IN THE BEAUTIFULLY REMODELED
Corte Madera Town Center

770 Tamalpais Drive | Corte Madera

Office Suites Available For Lease

±971 up to ±2,684 Rentable Square Feet



Mac Cranford, Sr. Managing Director
415.526.7644 mcranford@ngkf.com
CA RE License #00827619

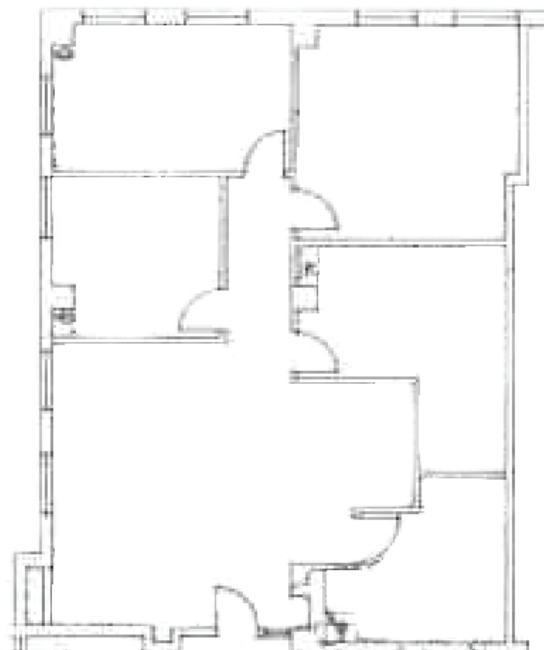
Corte Madera Town Center

770 Tamalpais Drive | Corte Madera

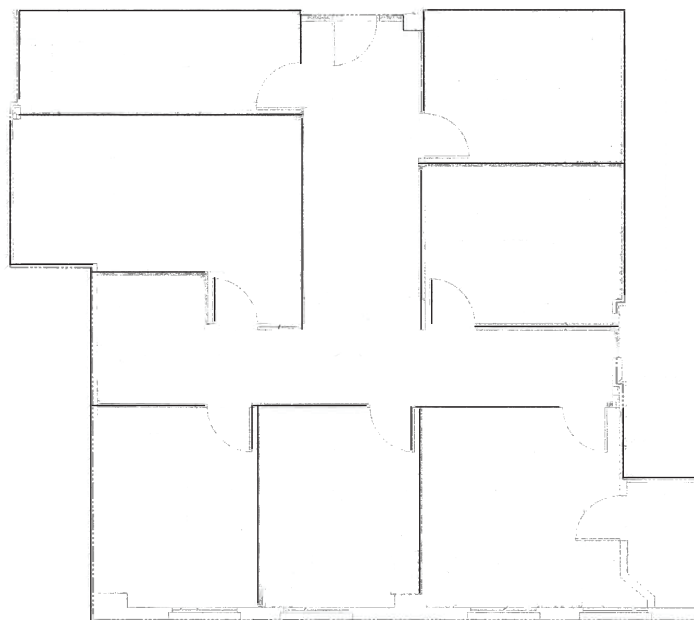
770 Tamalpais Drive has been remodeled to the highest quality finishes of any Class A office building in Marin (lobby, common areas, bathrooms). Check out the unique “living wall” in the lobby.

Second Floor Suites \$5.00/RSF (Tenant pays PG&E) 5 Year Term

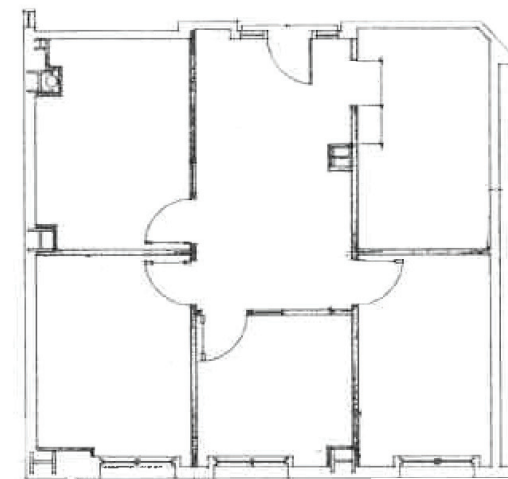
Suite 200 ±1,726 RSF



Suite 208 ±1,789 RSF



Suite 221 ±971 RSF



Floor plans not to scale.

LOBBY ENTRANCE



Building Features include:

- On-site management
- 24-hour security
- Operable windows
- On-site conference room
- Ample parking

Services at your door step include:

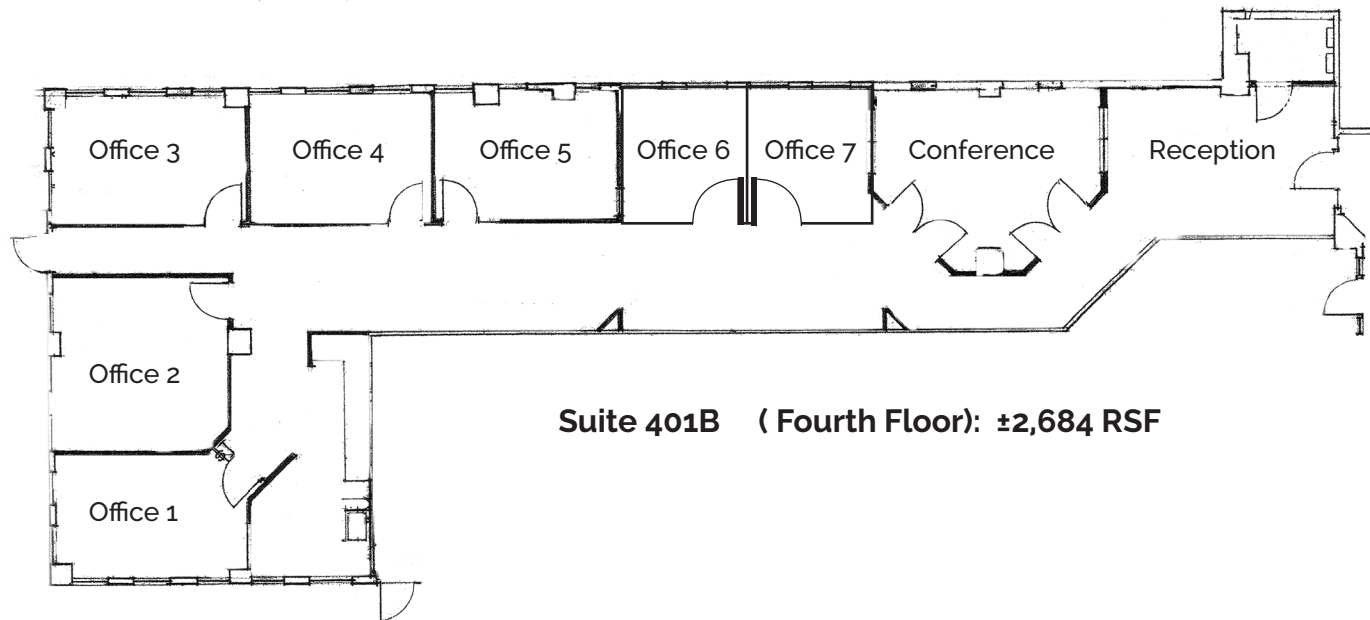
- Restaurants such as Il Fornaio, The Counter, La Maison De La Reine, California Pizza Kitchen, Veggie Grill, World Wrapps and more

- Bay Club
- Farmers Market
- Coffee Shops
- Comcast fiber optic internet service

Corte Madera Town Center

770 Tamalpais Drive | Corte Madera

- Suite 310 (Third Floor): ±1,083 RSF
- \$5.00/RSF (tenant pays PG&E)
- Open floor plan, deck, excellent natural light
- 5 Year Term
- Suite 401B (Fourth Floor): ±2,684 RSF
- \$5.00/RSF (tenant pays PG&E)
- Seven private glass-lined offices, conference room, kitchen, reception area, deck and good natural light



Suite 401B (Fourth Floor): ±2,684 RSF

